

SANCTIONED

SCHEDULE OF R.C.C. FOUNDATION

PILE CAP MKD.	COL MKD.	SIZE OF FOOTING	NO. OF PILE	DIA. OF PILE	REINFORCEMENT			
					TOP LAYER		BOTTOM LAYER	
					SHT. SPAN	LONG SPAN	SHT. SPAN	LONG SPAN
P1	C1,C3,C17,C19	900X1800	2	400Ø	12 T @125C/C	12 T @125C/C	12 T @125C/C	12 T @125C/C
P2	C7+C10	3000X3975	4	450Ø	16 T @150C/C	16 T @150C/C	16 T @150C/C	16 T @150C/C
P3	(C9+C12+LIFT)	4000X5000	6	450Ø	16T @125C/C	16 T @125 C/C	16T @125C/C	16 T @125C/C
P4	ALL OTHERS	AS PER DWG.	3	450Ø	16T @125C/C	16 T @125 C/C	16T @125C/C	16 T @125C/C

PILE MKD.	REINFORCEMENT		DIA. OF PILE	CUT OF PILE	LENGTH OF PILE
	REINFORCEMENT	STIRRUP			
ALL PILE	8-16T	8 T @115 C/C (END) 8 T @150 C/C (MID)	400Ø,450Ø	1.5M.	22M.

BEAM SCHEDULE

BEAM MKD.	SECTION	REINF.(SUPPORT)		REINF.(SPAN)		STIRRUP
		TOP	BOTTOM	TOP	BOTTOM	
		B1	250X350	3-12 2-16	3-16	
B2	250X300	2-12 2-16	2-16	2-12 2-16	2L-8T@150 c/c	
B3	250X400	3-16 2-16	3-16	3-16 2-16	2L-8T@150 c/c	
B4	250X450	3-16 3-16	3-16	3-16 3-16	2L-8T@150 c/c	
B5	250X600	3-20 3-20	3-20	3-20 3-20	4L-8T@150 c/c	
ALL TIE BEAMS	250X450	5-16	3-16	3-16 5-16	2L-8T@150 c/c	

SLAB SCHEDULE

SLAB MKD.	THICKNESS	REINFORCEMENT	
		MAIN REINF.	DISTRIBUTION
		S1	8 T @ 125 c/c
S2	8 T @ 125 c/c	8 T 150 c/c	
S3	10 T @ 150 c/c	10 T 150 c/c	

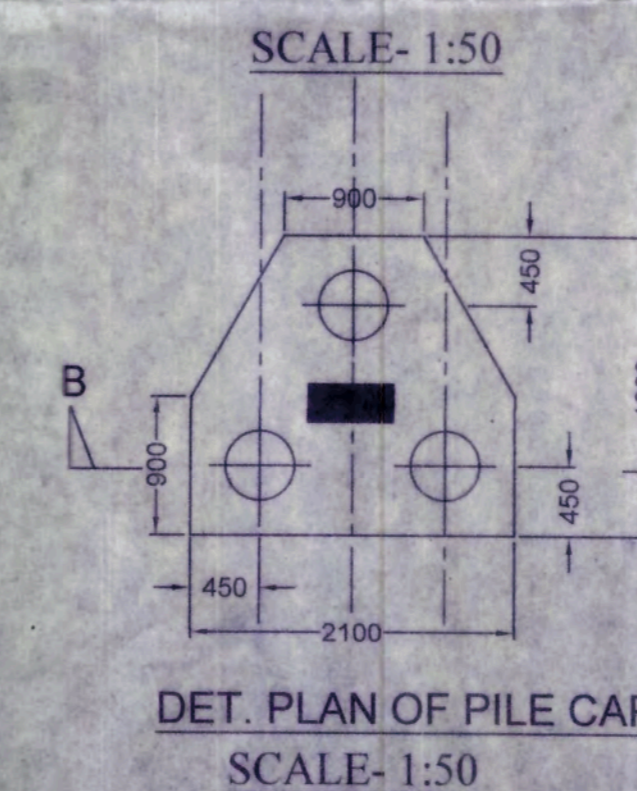
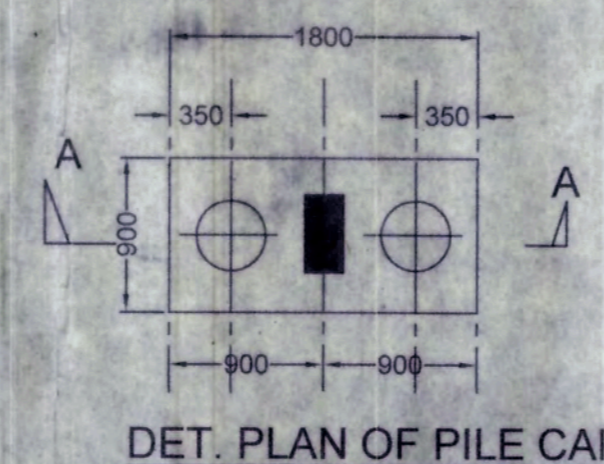
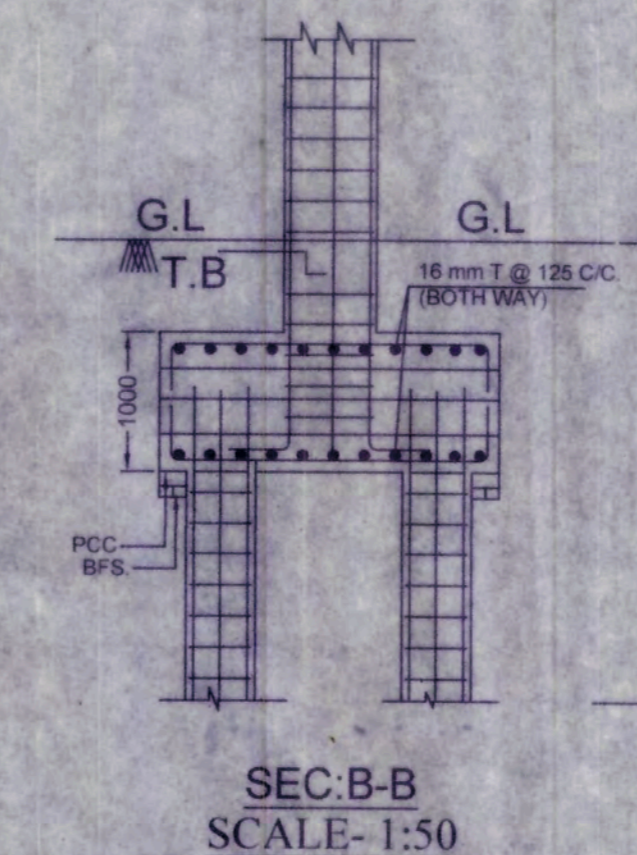
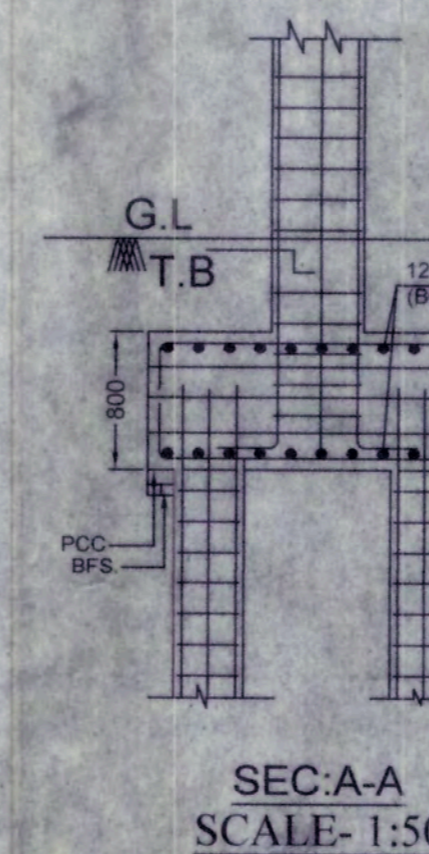
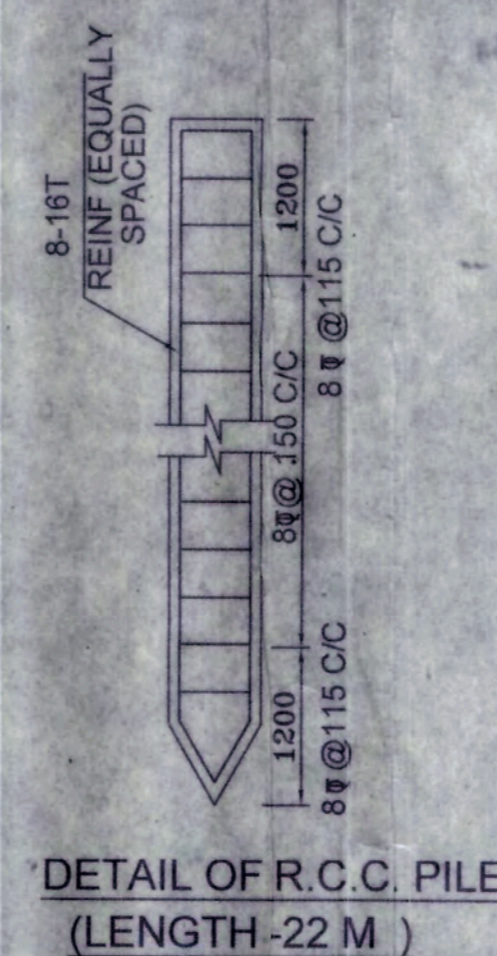
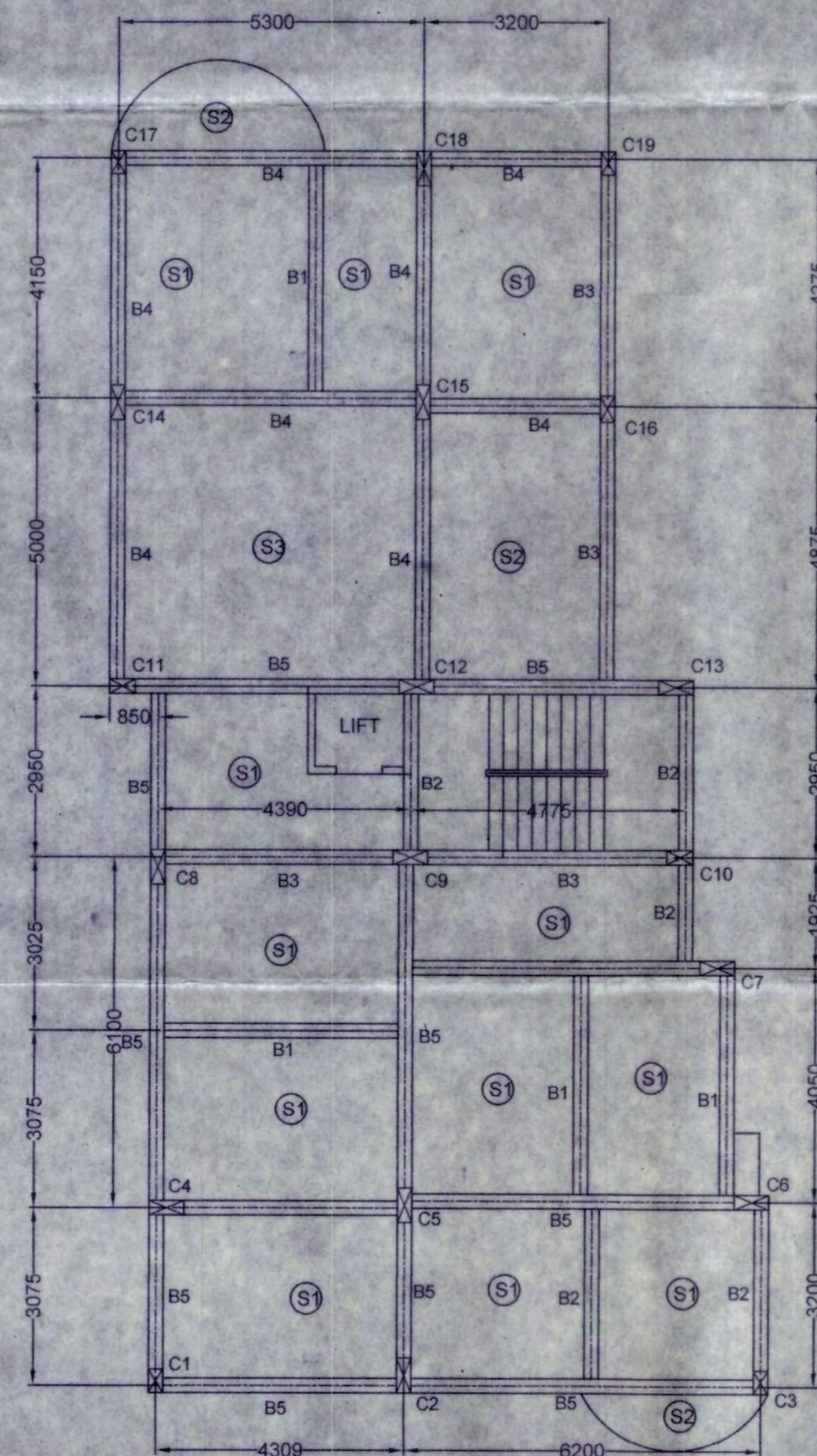
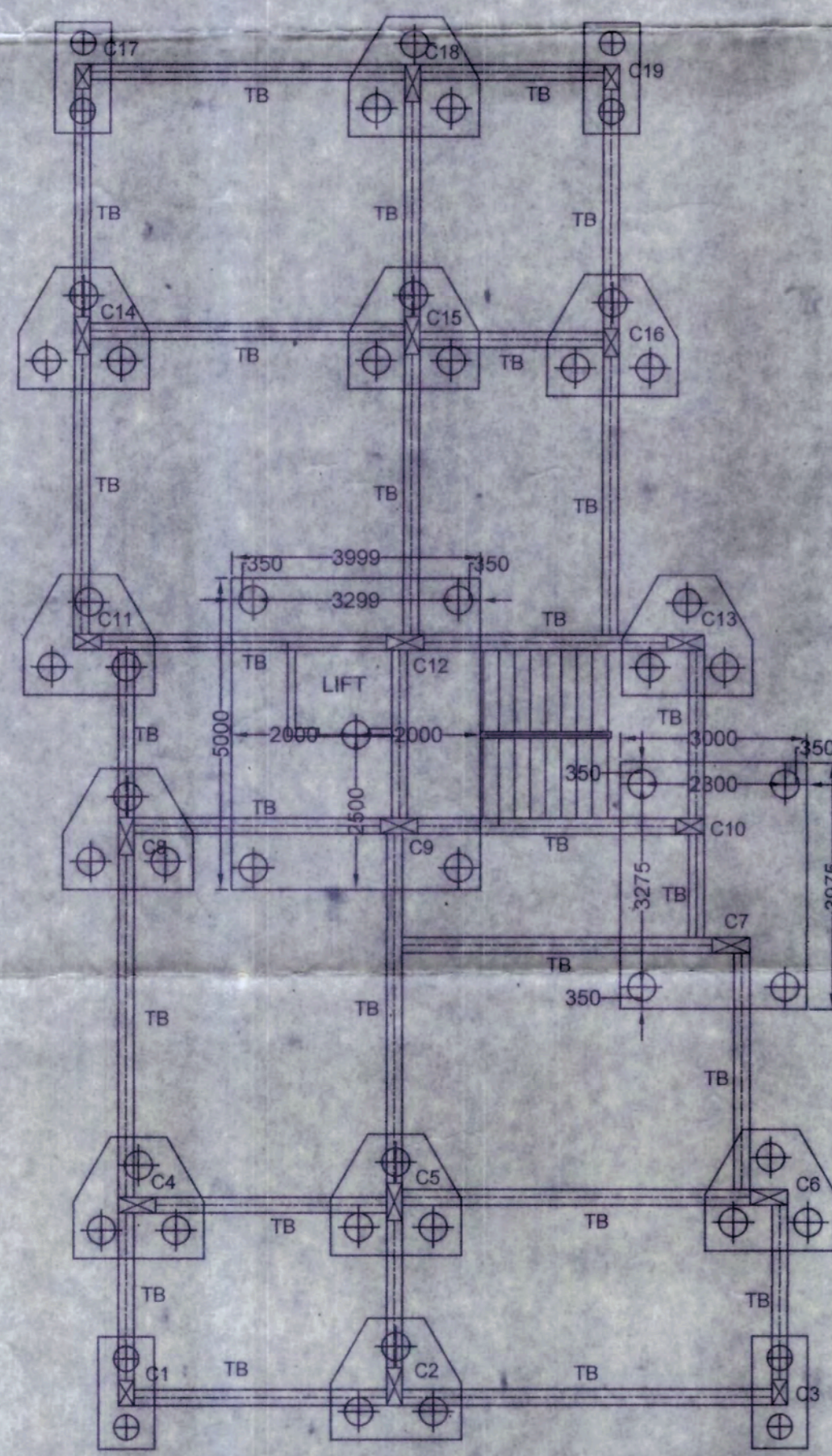
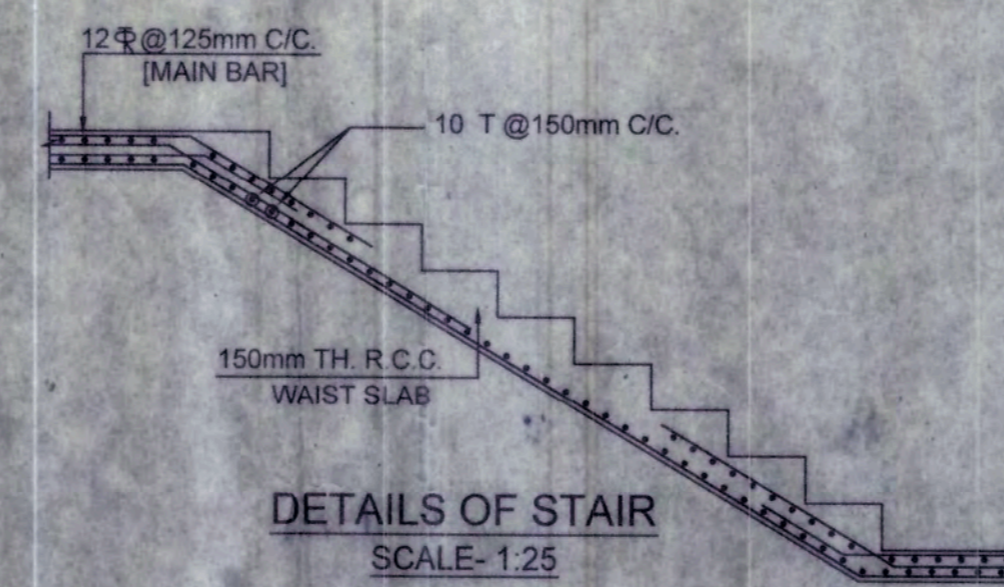
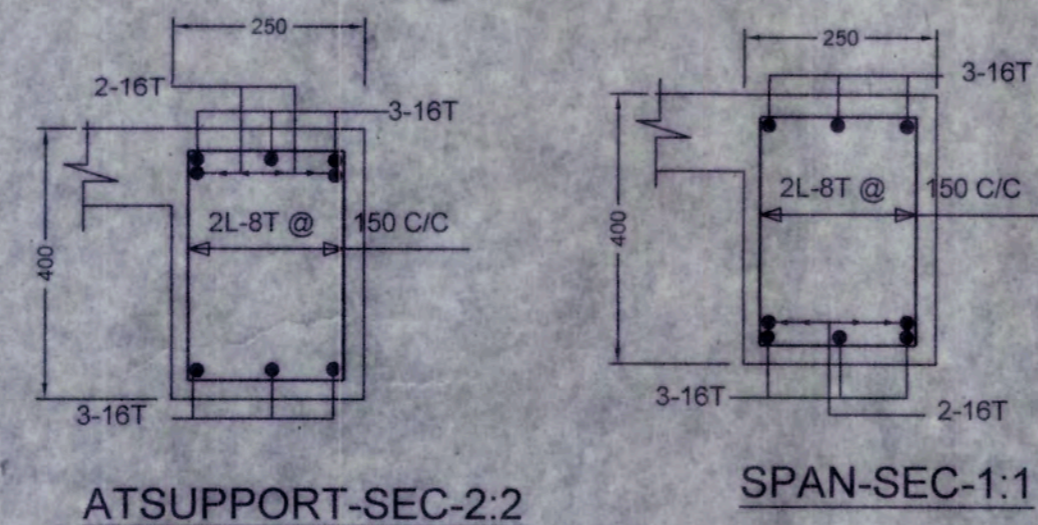
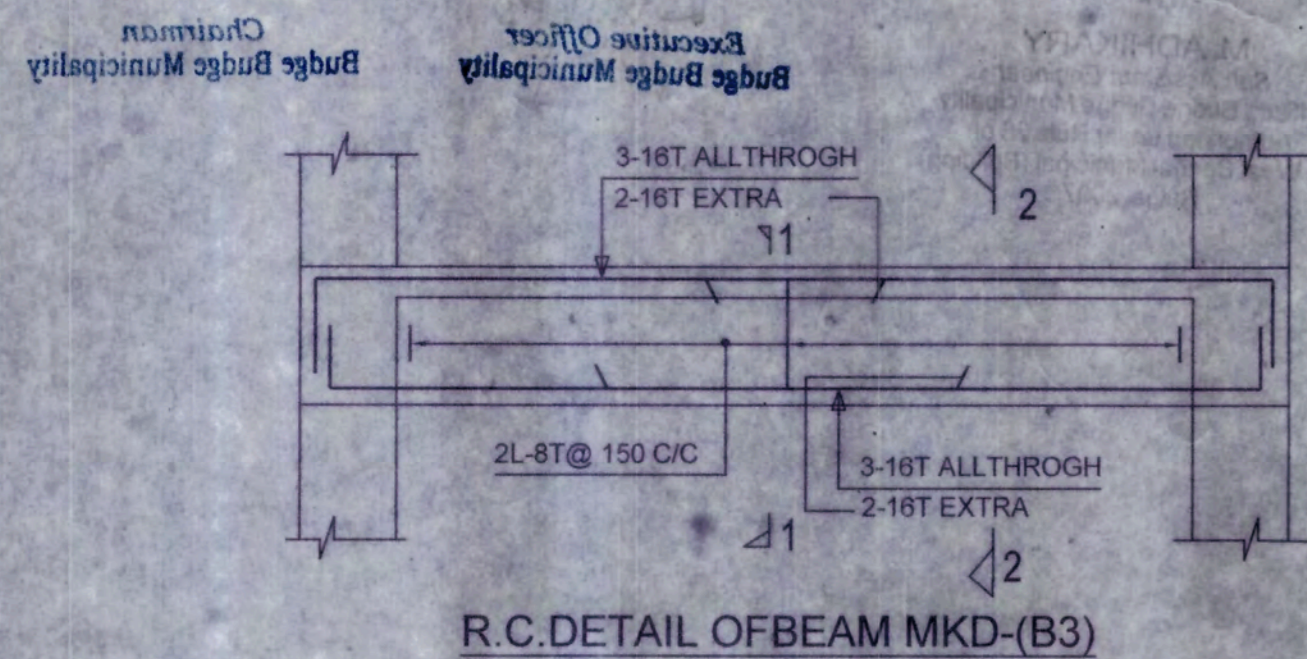
PROVIDE 8 T 150 c/c AT EDGES AS EXTRA TOP

COLUMN SCHEDULE

COLUMN MKD.	SECTION	REINFORCEMENT	TIE
C1,C3,C17,C19	250X400	8-16T	2L-8T@150 c/c
C10,C11,C16	250X450	8-16 T	2L-8T@125 c/c
ALL OTHERS	250X600	10-20 T	4L-10T@125 c/c

NOTES & SPECIFICATIONS

- ALL DIMENSIONS ARE IN MM UNLESS OTHERWISE MENTIONED
- GRADE OF CONCRETE M20 AND GRADE OF STEEL FE415
- CENTER LINE GIVEN HERE ARE BEAM CL ONLY
- IN CASE OF ANY DISCREPANCY IN DWG REFER TO ARCHITECT
- FOUNDATION - 1) BOTTOM COVER-50MM SHOULD BE MAINTAINED
- 2) SIDE COVER-75MM
- COLUMN - CLEAR COVER -40MM
- BEAM - 1) TOP-25MM, 2) BOTTOM-25MM, 3) SIDE-15MM
- SLAB - 1) BOTTOM-15MM 2) SIDE-15MM
- EXTRA TOP REINFORCEMENT - 0.25XC/C DISTANCE OF DISCONTI SUPT
- EXTRA TOP REINFORCEMENT - 0.25XC/C DISTANCE OF CONTI. SUPT
- EXTRA BOTTOM REINFORCEMENT - 0.10XC/C DISTANCE OF DISCONTI SUPT
- EXTRA BOTTOM REINFORCEMENT - 0.15XC/C DISTANCE OF CONT. SUPT
- SLAB: 1) TOP CURTAILMENT OF BAR - 0.10XC/C DISTANCE OF DISCONTINUOUS EDGE
- 2) TOP CURTAILMENT OF BAR - 0.15XC/C DISTANCE OF CONTINUOUS EDGE
- 3) BOTTOM CURTAILMENT OF BAR - 0.15XC/C DISTANCE OF DISCONTI EDGE
- 4) BOTTOM CURTAILMENT OF BAR - 0.25XC/C DISTANCE OF CONTI EDGE
- 5) EXTRA TOP CURTAILMENT OF BAR - 0.30XC/C DISTANCE OF CONTI. EDGE
- BOND/LAP LENGTH FOR REINFORCEMENT -50D, PILE DEPTH SHOULD BE MAINTAINED -22M



Dipankar Sadhukhan
Dipankar Sadhukhan
Structural Engineer-I
Budge Budge Municipality
Reg. No.: BBM/BD/12

SIGN. OF STRUCTURAL ENGINEER

Soumen Pramanick
SOU MEN PRAMANICK
LBS Class-II
Budge Budge Municipality
Reg. No.-11
SIGN. OF L.B.S.

S. SREERAM REDDY
REGISTERED ARCHITECT
Regd. No. CA/2001/28517

Bofan Vyapaar Pvt. Ltd.
Satyendra Kum
Director

SIGN. OF OWNER

SIGN. OF GEO-TECH

RESIDENTIAL APARTMENT BUILDING COMPLEX OF M/S BOFAN VYAPAAR PRIVATE LIMITED AT HOLDING NO. 74/B, ADHAR DAS ROAD, AT MOLUZA KALINAGAR BADE, J.L. NO. 07, R.S. DAG NO. 830, 832, 833, 834, 835, 836, 837, 838, 839, 840 & 841, L.R. DAG NO. 926, 930, 931, 932, 933, 934, 935, 936, 937, 938 & 941, UNDER L.R. KHATIAN NO 2347, P.S. BUDGE BUDGE, DIST. SOUTH 24 PARGANAS, UNDER BUDGE BUDGE MUNICIPALITY, WARD NO.14.

BLOCK D: STRUCTURAL DRAWINGS

DWG. NO. : 21 S15 17
DATE : 4/7/21
S.D. : SB
DRAWN BY : S. ROY



SANCTIONED

Regd. No. 31
Date 15/11/2021
Name Sh. Satyendra Gupta Director of M/S. Babon Vyapaar Pvt Ltd.
Address 74/B, Acharya Datta Road,
Ward No. 14

Building Plan Sanctioned under Rule-21 (I) of the West Bengal Municipal (Building) Rules-2007 by the Board of Councillors at a meeting held on 24.12.2021 at item no. 12 of 36

Building Permit No. 23/BP/PWD/2022-2023
Date 11/01/2023
Valid up to 25/08/2025
Renewal within 25/08/2025



Intimation to be Submitted Regarding Completion of work in from-G under Rule-33 Construction would be made strictly According to enclosed Sanction Plan

M. Adhikary 2023
M. ADHIKARY
Sub Assistant Engineer
Officer, Budge Budge Municipality
Authorized under Rule 26 of the West Bengal Municipal (Building) Rules, 2007

S. Saha
Executive Officer
Budge Budge Municipality

S. Saha 13.01.23
Chairman
Budge Budge Municipality

Red No. BMBWBD/12
Budge Budge Municipality
Structural Engineer-1
Budge Budge Municipality

Red No. BMBWBD/12
Budge Budge Municipality
Structural Engineer-1
Budge Budge Municipality

Red No. BMBWBD/12
Budge Budge Municipality
Structural Engineer-1
Budge Budge Municipality